

众志成城，共铸辉煌
Unity Together, Create Prosperity

TIANJIN XINYUE STEEL GROUP

TIANJIN XINYUE STEEL GROUP

HQ: Daqiuzhuang Industrial Area, Jinghai County, Tianjin, China, PC 301606

ERW STEEL PIPE

EXPORT OFFICE IN TIANJIN:

Address: 22nd Floor, North Tower, Vision Hill, Huayuan Industrial Zone,
NanKai District, Tianjin, China, PC 300384

Tel: +86-22-58357357, 58357359, 58357361

Fax: +86-22-58357360

Mail: sales@xinyuesteel.com

URL: www.xinyuesteel.com

EXPORT OFFICE IN HUNAN:

Address: Room 1808-1809, 18th Floor, Bailey Mansion,
No.208, South Xiaoxiang Avenue, Yuelu District,
Changsha, Hunan, China, PC 410000

Tel: +86-731-89702586, 89702576, 89702596

Fax: +86-731-89702586

Mail: sales@xysteelpipe.com

URL: www.xysteelpipe.com



天津信跃钢铁集团

天津信跃 成就卓越

Tianjin Xinyue makes excellence

XINYUE STEEL YOUR BEST CHOICE WITH ONE-STOP SOLUTION OF STEEL PIPE

信跃文化
XINYUE CULTURE

Xinyue Principle 信跃信条

诚信为本，客户至上，高质高效

Integrity-Based, Customer First, High Quality, High efficiency.

Xinyue Vision 信跃愿景

提升客户价值，专注优质产品（质量优，价格优，服务优，交期优），

Advance Customer Value with Best Price, Good Quality, First-class Service, Fast Shipment.

Xinyue Goal 信跃目标

信跃钢铁，与你携手，共创辉煌

You and Xinyue Steel, Hand in Hand, Make Great Success.

CONTENTS

Customer Satisfaction is the guarantee of brand
Quality assurance is the soul of brand

- 1** 集团文化
GROUP CULTURE
- 2** 集团介绍
GROUP INTRODUCTION
- 3** 产业链组成
INDUSTRY CHAIN
--电阻焊钢管生产基地
ERW STEEL PIPE PRODUCTION BASE
- 4** 品质保证
QUALITY CONTROL
- 5** 资质证书
QUALIFICATION
- 6** 工程案例
ENGINEERING CASE

ABOUT XIN YUE

关于我们

天津信跃钢铁集团源于1980年，位于天津市大邱庄工业区，临近天津港，是中国著名的大型钢管企业之一，集钢管生产，库存，代理，国内外销售为一体。竭诚为客户打造最优的品牌“价格最优，质量最优，交期最优，服务最优”。

信跃钢铁集团在天津、河北、山东等地投资了数个电阻焊钢管，螺旋埋弧焊钢管，直缝埋弧焊钢管，无缝钢管，油套管，钻杆，镀锌管，方矩管，脚手架以及扣件生产基地。

集团下各生产基地分别引进了国内外先进的技术及生产设备，在专业的工程师团队和生产部门引领下，时刻谨遵严格的ISO质量管理体系及各国生产标准规范，以确保产品的高品质。

公司始终坚持“诚信为本，客户至上，高质高效”的理念，以最好的服务回报客户，力求客户满意率100%。

集团下属的出口公司—天津信跃工贸有限公司，主要负责集团的钢管出口业务，产品已广泛用于多项国际石油天然气输送工程，疏浚打桩工程，水利，桥梁及油井工程等项目。出口辐射范围包括东南亚，中东，欧洲，南美以及非洲等地，并取得国内外广大客户的一致好评。

欢迎来到信跃！

信跃钢铁，与你携手，共创辉煌。

Tianjin Xinyue Steel Group was founded in 1980, located in Daqiu Zhuang Industrial Area, Tianjin, China, is one of the most famous enterprises of steel pipe in China, consolidating steel pipe production, stocking, distribution, domestic & international marketing. Our aim is to create the best corporation image for customer with “ Best Price, High Quality, Fast Delivery, and First-Class Service” .

Xinyue has invested several production bases in Tianjin, Hebei and Shandong Province, manufacturing ERW Steel Pipe, SSAW Steel Pipe, LSAW Steel Pipe, Seamless Steel Pipe, OCTG Tubing & Casing, Drill Pipe, Galvanized Steel Pipe, Hollow Section Tube, Scaffolding and couplers.

Equipped with domestic & international advanced technology and production line, and guided with the leadership of professional engineers and production team, Xinyue can strictly follow up ISO quality management system and meet regulations of various standards with the assurance of supreme quality

Xinyue Steel always insists on the principle of “ Integrity-Based, Customer First, High Quality, High efficiency ”, pursuing 100% customer satisfaction.

Tianjin Xinyue Industrial and Trade Co., Ltd, as a subsidiary under the group, is mainly responsible for exporting business under the group. Xinyue Steel has successfully supplied steel pipes for many international projects, engaging in petroleum & gas pipeline, dredging, piling, bridge building, water conservancy, oil well and other projects. Our market share is spreading all over the world, such as Southeast Asia, Mideast, Europe, South America, Africa and so on, obtaining a good reputation among customers.

Welcome to join Xinyue, Hand in Hand, Create Win-Win Business!

企业架构 CORPORATION STRUCTURE

Chinese
steel
pipe
forerunner



众志成城，共铸辉煌
Unity Together, Create Prosperity

电阻焊钢管生产基地

ERW STEEL PIPE PRODUCTION BASE

信跃电阻焊钢管生产基地分别设在天津和河北，现拥有6条高频直缝电阻焊钢管生产线，两条热镀锌钢管生产线，员工600人，中高级工程技术人员116人，年生产能力可达60万吨。

公司拥有先进的HFW直缝高频焊接机组、精密纵剪机组、焊缝热处理设备，在线及离线无损检测设备、双工位平头倒棱机、水压试验机、自动涂敷设备、全自动打包设备以及配套的实验检测中心等，可生产石油、天然气开采用套管、油管、割缝管及穿孔管，低压流体输送用管线管，水管，桩管，结构管等各类钢管，可生产口径从21.3mm到660mm，壁厚从0.8mm到22.2mm的直缝电阻焊钢管。

工厂严格遵循ISO9001:2000质量管理体系标准，取得了美国石油协会API 5L PSL1/ PSL2 和API 5CT 认证，从原材料的采购及检测，开卷，钢管成型，在线检验，成品检测，防腐，喷标，包装，入库，出运到售后服务，严格规范与把控各环节，严把质量关，追求零缺陷，坚持走以质量创造品牌的公司发展路线，打造客人满意工程。

Xinyue ERW steel pipe production base was located in Tianjin and Hebei, equipped with 6 high frequency straight seam electric resistance welding production line, 2 hot-dipped galvanizing steel pipe production line, with a team of 600 workers, 116 senior engineers and technicians; the annual production capacity can reach 600,000tons.

The production line has advanced high-frequency straight seam electric resistance welding machine, precise vertical cutting machine, welding seam heat-treatment machine, online & offline non-destructive test machine, double-head chamfering machine, hydrostatic test machine, automatic coating machine, automatic packing machine, and together with national accredited inspection & test center; It can produce casing & tubing for oil & gas exploration, slotted pipe & perforated pipe, low fluid transmission line pipe, water transportation pipeline, piling pipe, structure pipe, and etc., with the production size from out diameter 21.3mm to 660mm, wall thickness from 0.8mm to 22.2mm.

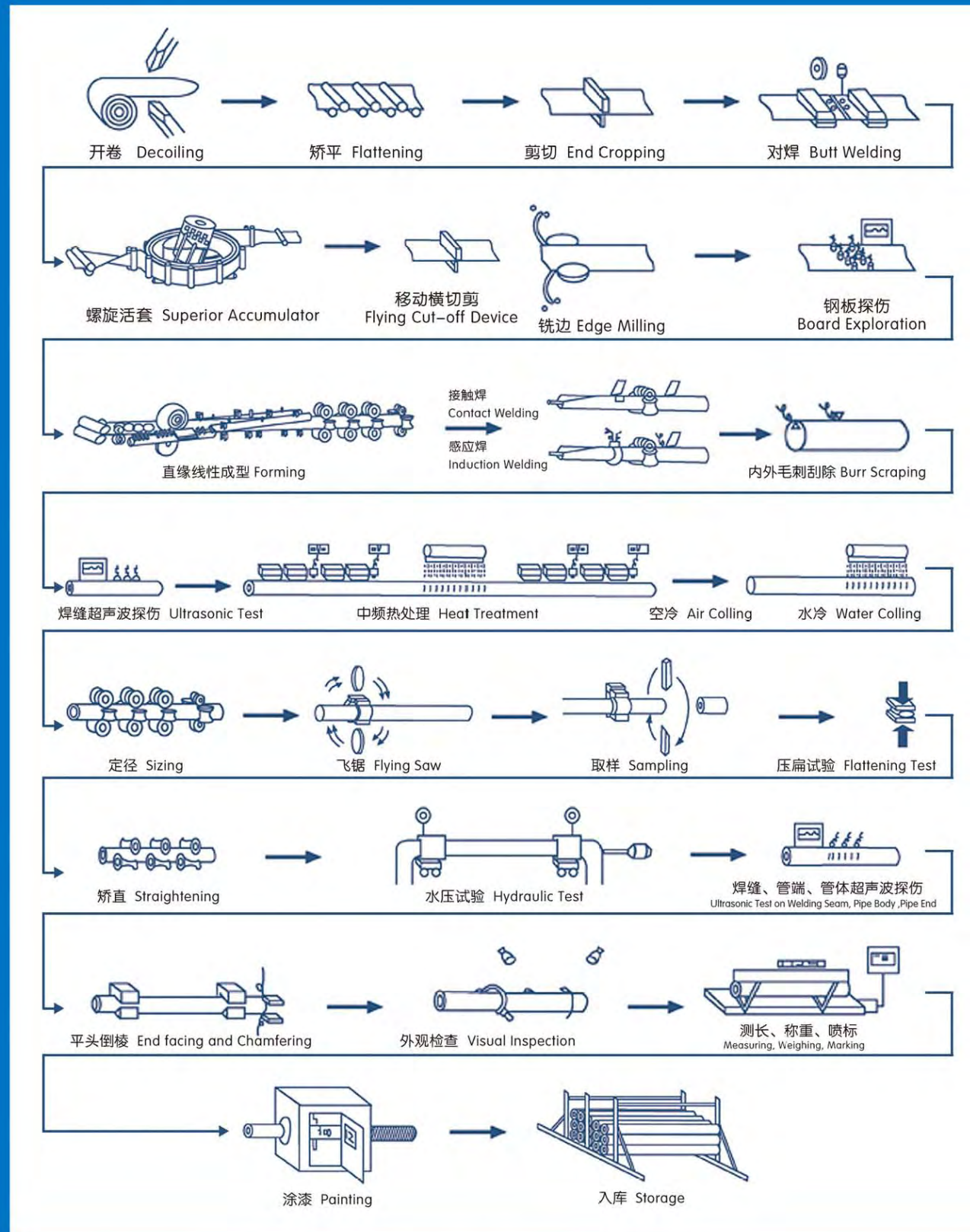
In strict accordance with ISO9001: 2000 quality management system and monitored by American Petroleum Institute with API 5L PLS1/PSL2 & API 5CT accreditation, we has developed perfect processing & inspecting instruction and controlled in details from raw material purchasing & inspection, uncoiling, pipe forming, online inspection, finished pipe testing, anti-corrosion coating, marking, packing, storage, shipment until to after-sale service.

Believing "Quality Foster Brand" is the soul of Xinyue's development, we strictly monitor product's quality, pursue zero defects, aiming to create a customer satisfaction project.



电阻焊钢管生产工艺流程图

ERW STEEL PIPE MANUFACTURING PROCESS FLOW CHART



一流设备

国际领先

First-class equipment, Leading international

赢在起跑线上...

Win at the starting line

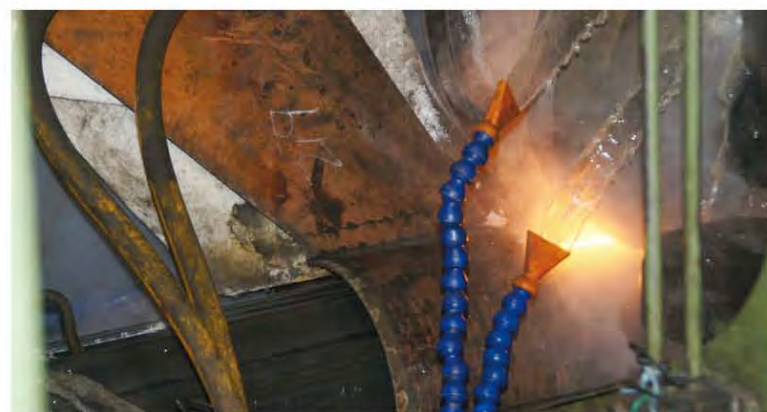
品质铸就品牌，品牌引领未来 Quality Foster Brand, Brand Lead Future

先进的自动化生产设备，流水线精良制作，尽显一流品质，保证产品的稳定性和可靠性万无一失。依靠核心技术，创造名牌产品，不管世界如何变化，信跃人精益求精的执着精神不变。

With advanced automatic production line and detailed processing control, Xinyue can produce the first-class steel pipe with stable and reliable performance. Strong believing quality and core technology create brand, Xinyue has never changed the spirit of striving for zero defects products, whatever the world change.



先进的生产设备
ADVANCED EQUIPMENT





在线检测设备

ONLINE INSPECTION FACILITIES

在线钢板探伤：采用脉冲反射式组合探头纵波探伤法12通道，对钢板纵向缺陷进行全板体100%探测。

Online Flaw Detection for steel coils: 100% flaw detection on longitudinal flaws of whole steel coils through longitudinal wave flaw detection method by a combination of pulse reflection probes with 12 channels.

在线焊缝无损检测：焊缝缺陷检测、热影响区分层检测和内毛刺高度控制，以保证对焊缝和内毛刺的缺陷100%检测、跟踪和切除。

Online NDT flaw detection for welding seam: flaw detection for welding seam, stratified detection for heat affected zone, height control for inside burrs, to ensure 100% detecting, tracking, removing the flaws of the welding seams and the inside burrs.

压扁试验：生产过程中做0°和90°压扁试验，保障焊管的基本性能要求。

Flattening test: flattening test at 0° and 90° during production process to ensure the basic properties of welded steel pipes.

水压试验：对每根钢管的母材和焊缝提供密实性保障。

Hydrostatic Test: to ensure the high compaction of base metal and welding seam of each steel pipe.

电磁超声探伤：对焊管全管体进行无损检测，覆盖焊管面积100%。

Electromagnetic ultrasonic flaw detection: NDT flaw detection on whole body of each steel pipe, which covers 100% area of the welded steel pipes.

离线焊缝无损检测：用于水压试验后钢管焊缝缺陷检测、焊缝两侧分层检测。

Offline NDT flaw detection for welding seam: flaw detection for welding seam, and stratified detection for two sides of welding seam after hydrostatic testing of welded steel pipes.



非常品质
有口皆碑

Top Quality, Everyone Knows
赢在起跑线上...

生产规格 MANUFACTURING SPECIFICATION

产品Product: ERW Steel Pipe

工艺Technique: High Frequency Electric Resistance Welding

用途Usage : Oil & Gas Transmission , Offshore Line Pipe, Sour Service and etc.

标准和钢级 Standard and Steel Grade:

API 5L PSL1 : GR B、X42、X46、X52、X56、X60、X65、X70、X80

API 5L PSL2: BN、X42N、X46N、X52N、X56N、X60N、X65Q、X70Q、X80Q

API5L PSL2 (Annex H) Sour Service: BNS、BQS、X42NS、X42QS、X46NS、X46QS、X52NS、X52QS、X56QS、X60QS、X65QS、X70QS

API 5L PSL2 (Annex J) Offshore Service: BNO、BQO、X42NO、X42QO、X46NO、X46QO、X52NO、X52QO、X56QO、X60QO、X65QO、X70QO、X80QO

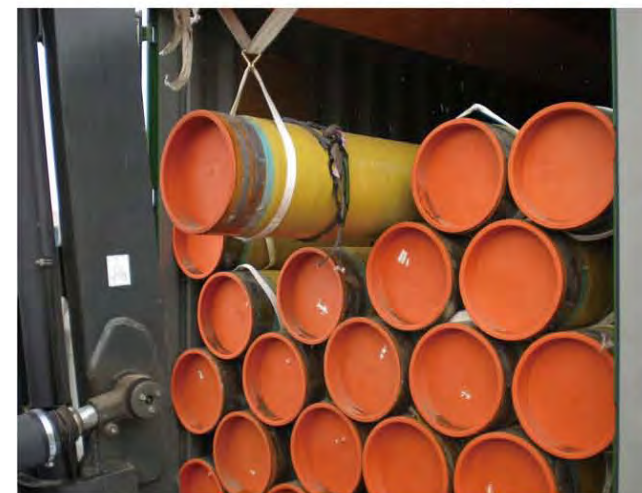
GB/T9711: L245N、L290N、L320N、L360N、L390N、L415N、L450Q、L485Q、L555Q

Out Diameter: 21.3mm –660mm

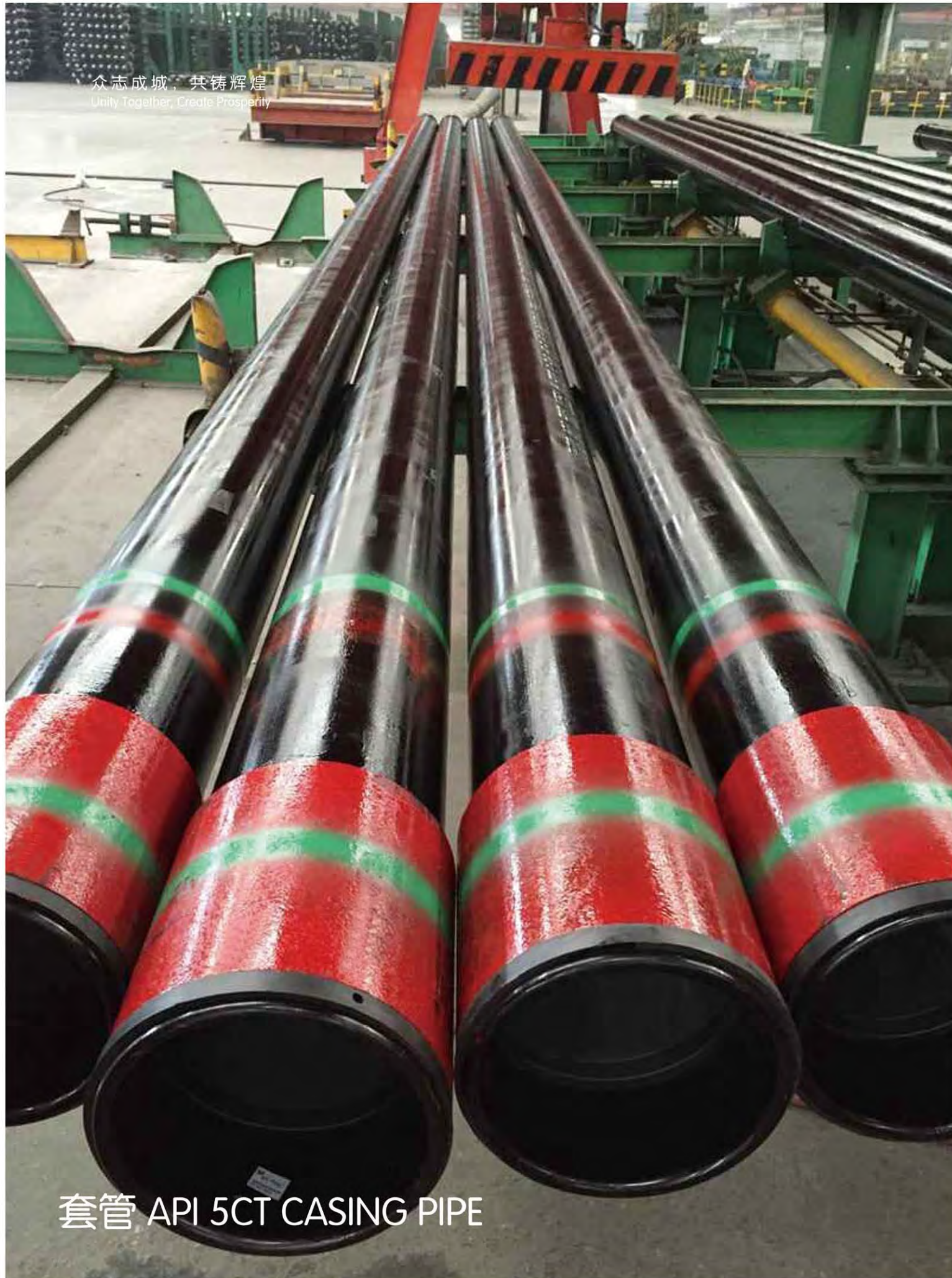
Wall Thickness: 0.80mm–22.2mm

Length: up to 18m

表面处理Surface : Fusion Bond Epoxy Coating, Coal Tar Epoxy, Polyamide Epoxy, 3PE, 3PP, Hot-dipped Galvanized, Zinc Coating , Bitumen, Vanish Coating, and etc.



生产规格: MANUFACTURING SPECIFICATION



众志成城，共铸辉煌
Unity Together, Create Prosperity

套管 API 5CT CASING PIPE

外径 INCH	重量代码	外径	名义重量	壁厚	端部加工形式 Ends Processing Type				
	Weight Code	Diameter	Theoretical Weight	Thickness	H40	J55	L80	N80-1	P110
		mm	kg/m	mm		K55			
4 1/2	9.5	114.3	14.14	5.21	PS	PS	-	-	-
	10.5	114.3	15.63	5.69	-	PSB	-	-	-
	11.6	114.3	17.26	6.35	-	PSLB	PLB	PLB	PLB
	13.5	114.3	20.09	7.37	-	-	PLB	PLB	PLB
	15.1	114.3	22.47	8.56	-	-	-	-	PLB
5	11.5	127	17.11	5.59	-	PS	-	-	-
	13	127	19.35	6.43	-	PSLB	-	-	-
	15	127	22.32	7.52	-	PSLB	PLB	PLB	PLB
	18	127	26.79	9.19	-	-	PLB	PLB	PLB
	21.4	127	31.85	11.1	-	-	PLB	PLB	PLB
	23.2	127	34.53	12.14	-	-	PLB	PLB	PLB
5 1/2	24.1	127	35.86	12.7	-	-	PLB	PLB	PLB
	14	139.7	20.83	6.2	PS	PS	-	-	-
	15.5	139.7	23.07	6.98	-	PSLB	-	-	-
	17	139.7	25.3	7.72	-	PSLB	PLB	PLB	PLB
	20	139.7	29.76	9.17	-	-	PLB	PLB	PLB
	23	139.7	34.23	10.54	-	-	PLB	PLB	PLB
6 5/8	26.8	139.7	39.88	12.7	-	-	-	-	-
	20	168.28	29.76	7.32	PS	PSLB	-	-	-
	24	168.28	35.72	8.94	-	PSLB	PLB	PLB	PLB
	28	168.28	41.67	10.59	-	-	PLB	PLB	PLB
	32	168.28	47.62	12.06	-	-	PLB	PLB	PLB
7	17	177.8	25.3	5.87	PS	-	-	-	-
	20	177.8	29.76	6.91	PS	PS	-	-	-
	23	177.8	34.23	8.05	-	PSLB	PLB	PLB	-
	26	177.8	38.69	9.19	-	PSLB	PLB	PLB	PLB
	29	177.8	43.16	10.36	-	-	PLB	PLB	PLB
	32	177.8	47.62	11.51	-	-	PLB	PLB	PLB
7 5/8	35	177.8	52.09	12.65	-	-	PLB	PLB	PLB
	24	193.68	35.72	7.62	PS	-	-	-	-
	26.4	193.68	39.29	8.33	-	PSLB	PLB	PLB	-
	29.7	193.68	44.2	9.52	-	-	PLB	PLB	PLB
	33.7	193.68	50.15	10.92	-	-	PLB	PLB	PLB
	39	193.68	58.04	12.7	-	-	PLB	PLB	PLB
8 5/8	42.8	193.68	63.69	14.27	-	-	PLB	PLB	PLB
	24	219.08	35.72	6.71	-	PS	-	-	-
	28	219.08	41.67	7.72	PS	PS	-	-	-
	32	219.08	47.62	8.94	PS	-	-	-	-
	36	219.08	53.57	10.16	-	PSLB	PLB	PLB	PLB
	40	219.08	59.53	11.43	-	PSLB	PLB	PLB	PLB
9 5/8	44	219.08	65.48	12.7	-	PLB	PLB	PLB	PLB
	49	219.08	72.92	14.15	-	-	PLB	PLB	PLB
	32.3	244.48	48.07	7.92	PS	-	-	-	-
	36	244.48	53.57	8.94	PS	PSLB	-	-	-
	40	244.48	59.53	10.03	-	PSLB	PLB	PLB	-
	43.5	244.48	64.73	11.05	-	-	PLB	PLB	PLB
10 3/4	47	244.48	69.94	11.99	-	-	PLB	PLB	PLB
	53.5	244.48	79.62	13.84	-	-	PLB	PLB	PLB
	58.4	244.48	86.91	15.11	-	-	PLB	PLB	PLB
	32.75	273.05	48.74	7.09	PS	-	-	-	-
	40.5	273.05	60.27	8.89	PS	PSB	-	-	-
	45.5	273.05	67.71	10.16	-	PSB	-	-	-
11 3/4	51	273.05	75.9	11.43	-	PSB	PSB	PSB	PSB
	55.5	273.05	82.59	12.57	-	-	PSB	PSB	PSB
	60.7	273.05	90.33	13.84	-	-	-	-	PSB
	65.7	273.05	97.77	15.11	-	-	-	-	PSB
	42	298.45	62.5	8.46	PS	-	-	-	-
	47	298.45	69.94	9.53	-	PSB	-	-	-
13 3/8	54	298.45	80.36	11.05	-	PSB	-	-	-
	60	298.45	89.29	12.42	-	PSB	PSB	PSB	PSB
	65	298.45	96.73	13.56	-	-	P	P	P
	71	298.45	105.66	14.78	-	-	P	P	P
	48	339.72	71.43	8.38	PS	-	-	-	-
16	54.5	339.72	81.1	9.65	-	PSB	-	-	-
	61	339.72	90.78	10.92	-	PSB	-	-	-
	68	339.72	101.19	12.19	-	PSB	PSB	PSB	PSB
	72	339.72	107.15	13.06	-	-	PSB	PSB	PSB
18 5/8	65	406.4	96.73	9.53	PS	-	-	-	-
	75	406.4	111.61	11.13	-	PSB	-	-	-
	84	406.4	125.01	12.57	-	PSB	-	-	-
	109	406.4	162.21	16.66	-	P	P	P	P
20	87.5	473.08	130.21	11.05	PS	PSB	-	-	-
	94	508	139.89	11.13	PSL	PSLB	-	-	-
	106.5	508	158.49	12.7	-	PSLB	-	-	-
	133	508	197.93	16.13	-	PSLB	-	-	-

P: Plain end, S: Short round thread, L: Long round thread, B: Buttress thread

油管 API 5CT TUBING

INCH	代号 WEIGHT CODE			外径 Out Diameter mm	名义重量 Theoretical weight			壁厚 Thickness mm	端部加工形式 Ends Processing Type			
	不加厚带螺 纹和接箍 NUE	外加厚带螺 纹和接箍 EUE	整体接头 Whole Joint		不加厚带螺 纹和接箍 NUE	外加厚带螺 纹和接箍 EUE	整体接头 Whole Joint		H40	J55	L80	N80-1
1.66	2.09	-	2.1	42.16	-	-	3.13	3.18	PI	PI	-	-
	2.3	2.4	2.33	42.16	3.42	3.57	3.47	3.56	PNU	PNU	PNU	PNU
	3.03	3.07	-	42.16	4.51	4.57	-	4.85	PU	PU	PU	PU
1.9	2.4	-	2.4	48.26	-	-	3.57	3.18	PI	PI	-	-
	2.75	2.9	2.76	48.26	4.09	4.32	4.11	3.68	PNU	PNU	PNU	PNU
	3.65	3.73	-	48.26	5.43	5.55	-	5.08	PU	PU	PU	PU
2.063	3.24	-	3.25	52.4	-	-	4.84	3.96	PI	PI	PI	PI
	4.5	-	-	52.4	-	-	-	5.72	P	P	P	P
2 3/8	4	-	-	60.32	5.95	-	-	4.24	PU	PN	PN	PN
	4.6	4.7	-	60.32	6.85	6.99	-	4.83	PNU	PNU	PNU	PNU
	5.8	5.95	-	60.32	8.63	8.85	-	6.45	-	-	PNU	PNU
2 7/8	6.4	6.5	-	73.02	9.52	9.67	-	5.51	PNU	PNU	PNU	PNU
	7.8	7.9	-	73.02	11.61	11.76	-	7.01	-	-	PNU	PNU
	8.6	8.7	-	73.02	12.8	12.95	-	7.82	-	-	PNU	PNU
3 1/2	7.7	-	-	88.9	11.46	-	-	5.49	PN	PN	PN	PN
	9.2	9.3	-	88.9	13.69	13.84	-	6.45	PNU	PNU	PNU	PNU
	10.2	-	-	88.9	15.18	-	-	7.34	PN	PN	PN	PN
4	9.5	-	-	101.6	14.14	-	-	5.74	PN	PN	PN	PN
	10.7	11	-	101.6	-	16.37	-	6.65	PU	PU	PU	PU
4 1/2	12.6	12.75	-	114.3	18.75	18.97	-	6.88	PNU	PNU	PNU	PNU

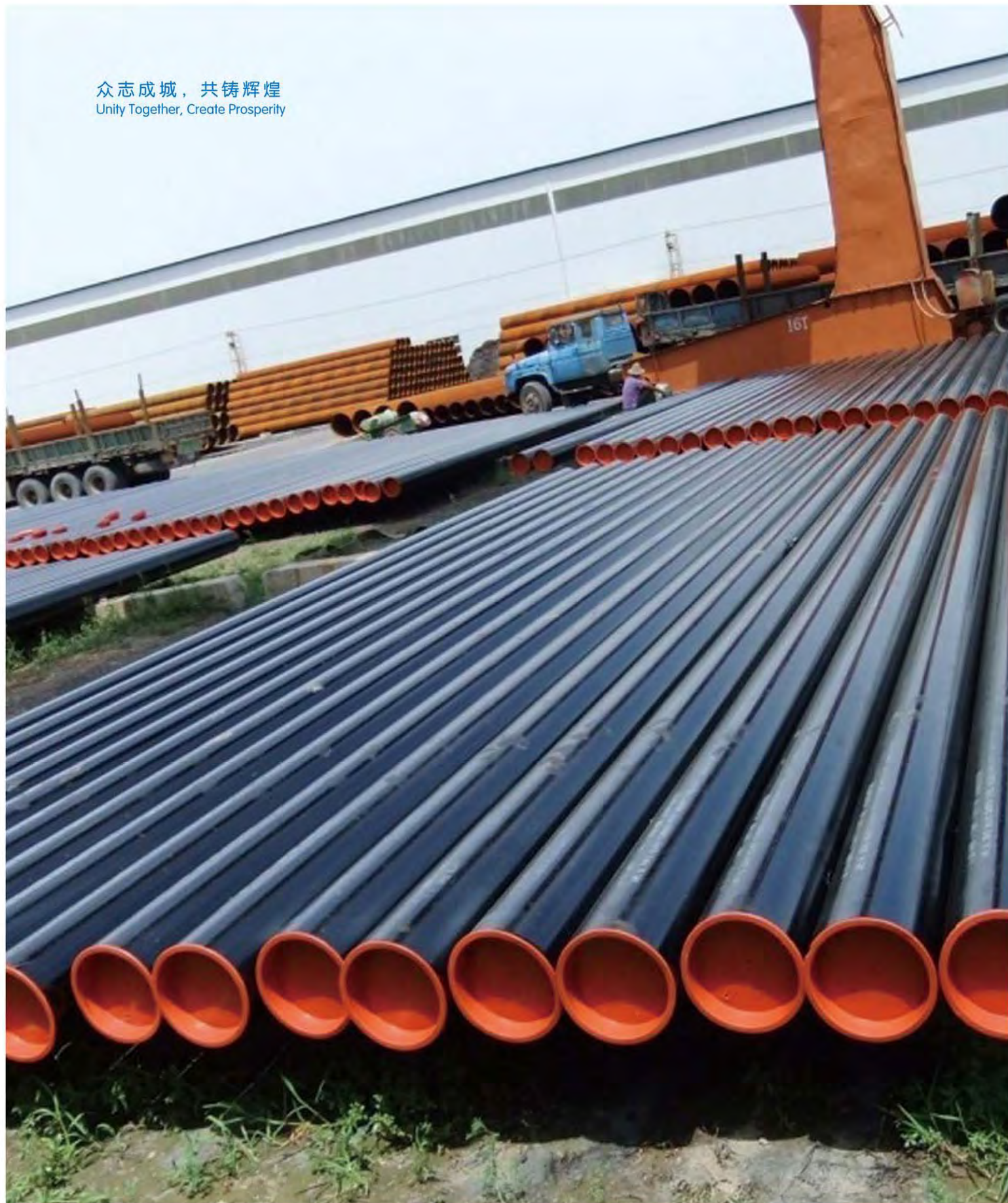
P: Plain end; N: Non-upset threaded and coupled; U: External Upset threaded and coupled; I: Whole Joint



割缝穿孔管 SLOTTED & PERFORATED PIPE



众志成城，共铸辉煌
Unity Together, Create Prosperity



产品展示 PRODUCT SHOW

质量控制

信跃集团拥有专业的工程师, 优秀的生产团队以及严格的ISO9001质量安全管理体系, 时刻为客户打造安全、可靠、质量信得过的产品。

Xinyue Steel possess with professional engineers & first-class production team and strict ISO 9001 quality and safety management system, pursuing to provide customer with safe, credible and quality trustworthy products.

Quality Control

信跃坚持以质量求生存，以技术进步谋发展，始终把打造精品作为企业生存的基本法则，通过原料质量控制、生产过程质量控制和成品检测控制，保证为客户提供满意合格的产品。

Insisting on the tenet of " Survive With Quality , Develop With Credibility ", Xinyue always provide customers with " Quality Trustworthy Products " , under the strict control on the raw material inspection, online production inspection ,finished pipe inspection and delivery.

Installed with well equipped laboratory,Xinyue can perform full set of experiments according to various domestic and international standards, including Chemical Composition Analysis, Metallurgical Analysis,Mechanical Property Test, Tension Test, Bending Test, Flattening Test, Hardness Test, Impact Test, Drop Weight Tear Test, and etc.



众志成城，共铸辉煌
Unity Together, Create Prosperity

QUALIFICATIONS

and honors 资质荣誉……



Honor Witness History
Strength Prospect Future

HONOR

INTEGRITY IS THE FOUNDATION SERVE THE SOCIETY

客户的满意始终是信跃的第一位
千锤百炼成就信跃品质
信跃，您可以信赖的伙伴
我们坚信品质是永续不变的潮流
信跃—行业的领航者

Customers' full satisfaction is always Xinyue's first priority
Severe controlled and steeled quality is Xinyue's soul
Do the respect and trustworthy enterprise
We firmly believe the quality is the permanent core
Xinyue - the pionner of the industry

